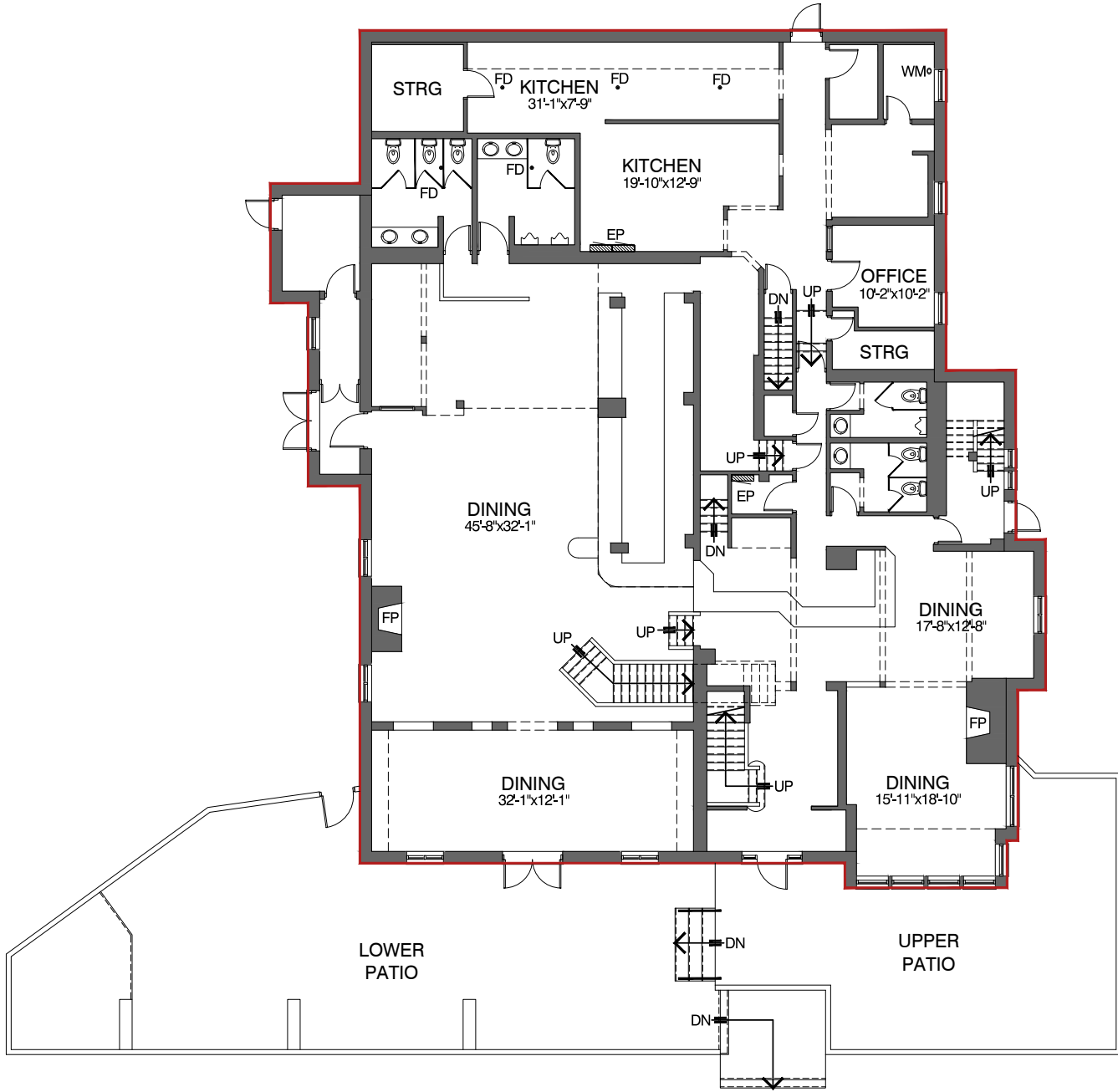


Do not scale drawings. Contractors must check and verify all dimensions and report any discrepancies to Mapply before proceeding with any work. All documents remain the property of Mapply. Unauthorized use, modification, and/or reproduction of these documents is prohibited without written permission. The material contained herein reflects the Consultants best judgement in light of the information available at the time of preparation. Any use which a third party makes of the documents, or any reliance on or decisions to be made based on them are the responsibility of such third parties. The Consultant accepts no responsibility for damages, if any, suffered by any third party as a result of decisions made or actions based on the documents.



Area Schedule (sq.ft.)

Main Floor Plan	5476.2
Total Gross Floor Area	8815.3

[CLICK TO TOUR](#)

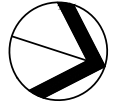
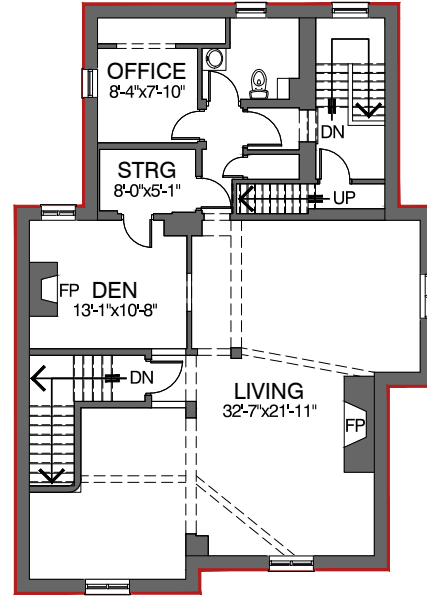


Do not scale drawings. Contractors must check and verify all dimensions and report any discrepancies to Mappy before proceeding with any work. All documents remain the property of Mappy. Unauthorized use, modification, and/or reproduction of these documents is prohibited without written permission. The material contained herein reflects the Consultant's best judgement in light of the information available at the time of preparation. Any use which a third party makes of the documents, or any reliance on or decisions to be made based on them are the responsibility of such third parties. The Consultant accepts no responsibility for damages, if any, suffered by any third party as a result of decisions made or actions based on the documents.

Area Schedule (sq.ft.)

Second Floor Plan	1472.5
Total Gross Floor Area	8815.3

[CLICK TO TOUR](#)

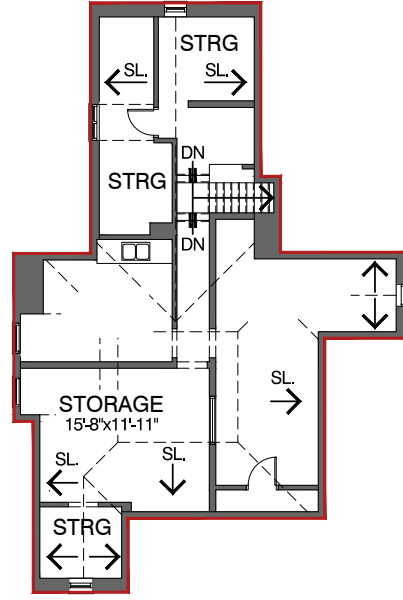


Do not scale drawings. Contractors must check and verify all dimensions and report any discrepancies to Mapply before proceeding with any work. All documents remain the property of Mapply. Unauthorized use, modification, and/or reproduction of these documents is prohibited without written permission. The material contained herein reflects the Consultant's best judgment in light of the information available at the time of preparation. Any use which a third party makes of the documents, or any reliance on or decisions to be made based on them are the responsibility of such third parties. The Consultant accepts no responsibility for damages, if any, suffered by any third party as a result of decisions made or actions based on the documents.

Area Schedule (sq.ft.)

Attic Floor Plan	966.3
Total Gross Floor Area	8815.3

[CLICK TO TOUR](#)



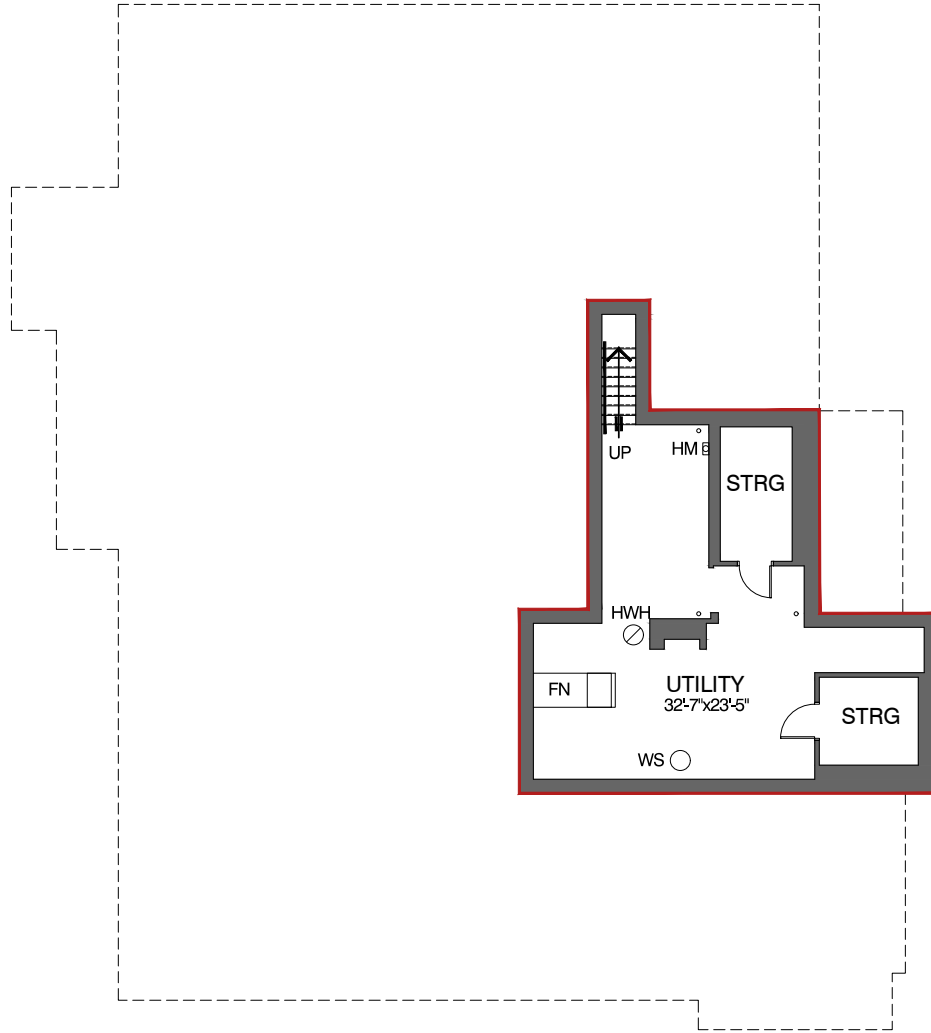
1/16" = 1'-0"
2023.05.08

ATTIC FLOOR PLAN

Project No.: 491.23.4
EXISTING CONDITIONS



Do not scale drawings. Contractors must check and verify all dimensions and report any discrepancies to Mapply before proceeding with any work. All documents remain the property of Mapply. Unauthorized use, modification, and/or reproduction of these documents is prohibited without written permission. The material contained herein reflects the Consultants best judgement in light of the information available at the time of preparation. Any use which a third party makes of the documents, or any reliance on or decisions to be made based on them are the responsibility of such third parties. The Consultant accepts no responsibility for damages, if any, suffered by any third party as a result of decisions made or actions based on the documents.



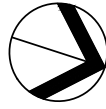
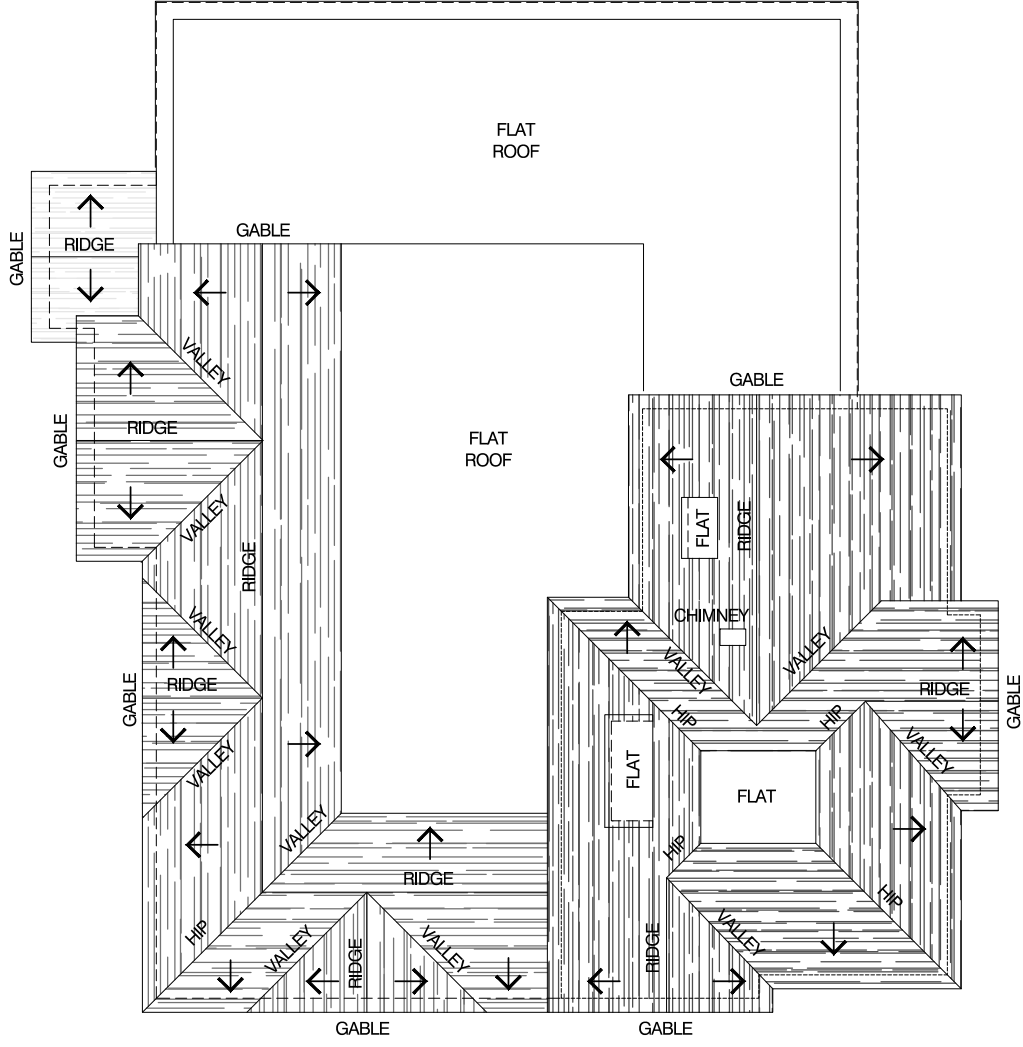
Area Schedule (sq.ft.)

Basement Floor Plan	900.3
Total Gross Floor Area	8815.3

[CLICK TO TOUR](#)



Do not scale drawings. Contractors must check and verify all dimensions and report any discrepancies to Mapply before proceeding with any work. All documents remain the property of Mapply. Unauthorized use, modification, and/or reproduction of these documents is prohibited without written permission. The material contained herein reflects the Consultants best judgement in light of the information available at the time of preparation. Any use which a third party makes of the documents, or any reliance on or decisions to be made based on them are the responsibility of such third parties. The Consultant accepts no responsibility for damages, if any, suffered by any third party as a result of decisions made or actions based on the documents.



Do not scale drawings. Contractors must check and verify all dimensions to Mapply before proceeding with any work. All documents remain the property of Mapply. Unauthorized use, modification, and/or reproduction of these documents is prohibited without written permission. The material contained herein reflects the Consultant's best judgment in light of the information available at the time of preparation. Any use which a third party makes of the documents, or any reliance on or decisions to be made based on them are the responsibility of such third parties. The Consultant accepts no responsibility for damages, if any, suffered by any third party as a result of decisions made or actions based on the documents.

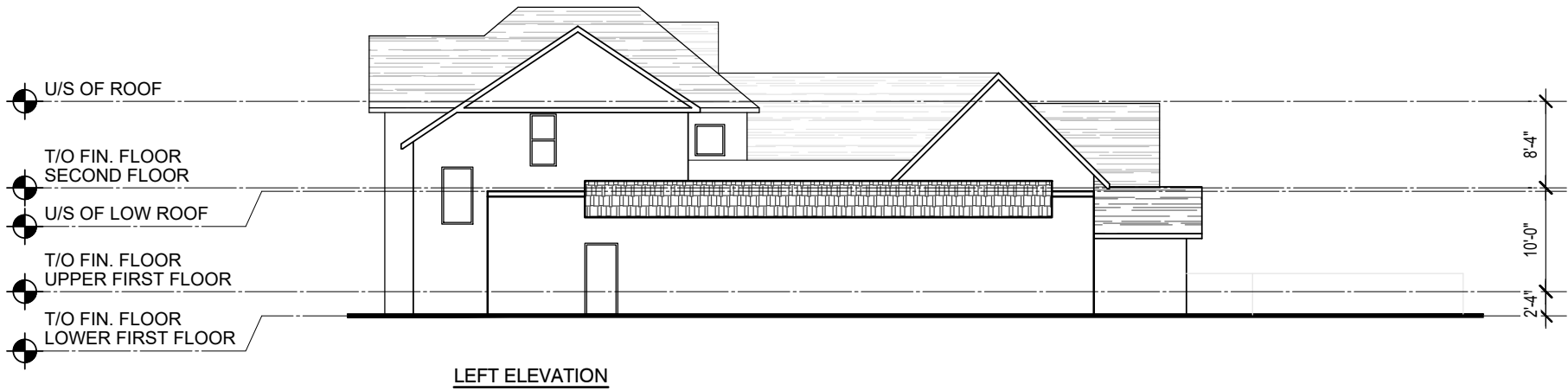
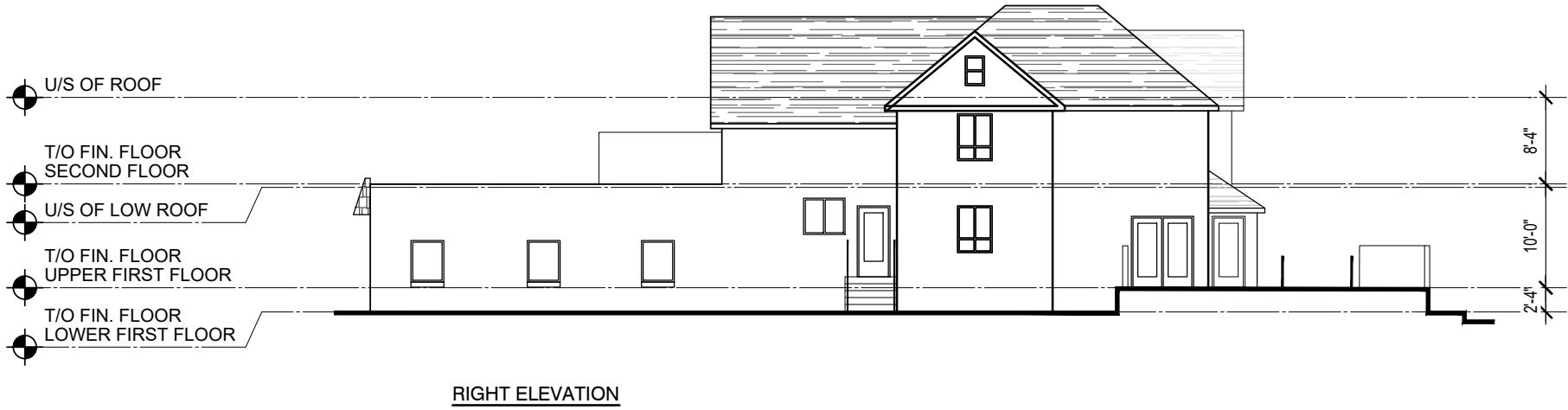


FRONT ELEVATION

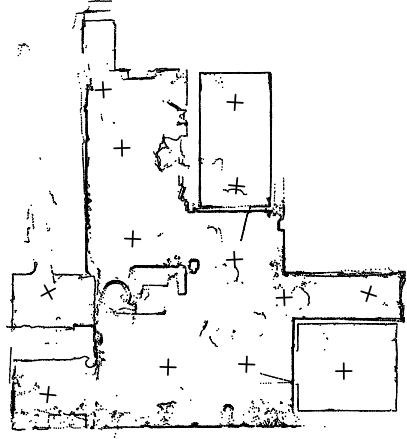


REAR ELEVATION

Do not scale drawings. Contractors must check and verify all dimensions and report any discrepancies to Mapply before proceeding with any work. All documents remain the property of Mapply. Unauthorized use, modification, and/or reproduction of these documents is prohibited without written permission. The material contained herein reflects the Consultant's best judgment in light of the information available at the time of preparation. Any use which a third party makes of the documents, or any reliance on or decisions to be made based on them are the responsibility of such third parties. The Consultant accepts no responsibility for damages, if any, suffered by any third party as a result of decisions made or actions based on the documents.



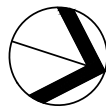
Do not scale drawings. Contractors must check and verify all dimensions and report any discrepancies to Mapply before proceeding with any work. All documents remain the property of Mapply. Unauthorized use, modification, and/or reproduction of these documents is prohibited without written permission. The material contained herein reflects the Consultant's best judgement in light of the information available at the time of preparation. Any use which a third party makes of the documents, or any reliance on or decisions to be made based on them are the responsibility of such third parties. The Consultant accepts no responsibility for damages, if any, suffered by any third party as a result of decisions made or actions based on the documents.



1/16" = 1'-0"
2023.05.08

BASEMENT PLAN - POINT CLOUD

Project No.: 491.23.4
EXISTING CONDITIONS



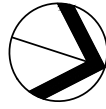
Do not scale drawings. Contractors must check and verify all dimensions and report any discrepancies to Mapply before proceeding with any work. All documents remain the property of Mapply. Unauthorized use, modification, and/or reproduction of these documents is prohibited without written permission. The material contained herein reflects the Consultants best judgement in light of the information available at the time of preparation. Any use which a third party makes of the documents, or any reliance on or decisions to be made based on them are the responsibility of such third parties. The Consultant accepts no responsibility for damages, if any, suffered by any third party as a result of decisions made or actions based on the documents.



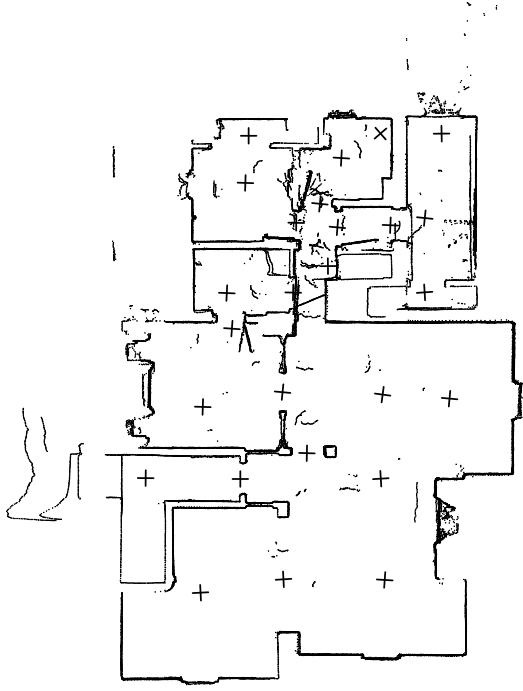
1/16" = 1'-0"
2023.05.08

MAIN FLOOR PLAN - POINT CLOUD

Project No.: 491.23.4
EXISTING CONDITIONS



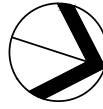
Do not scale drawings. Contractors must check and verify all dimensions and report any discrepancies to Mappy before proceeding with any work. All documents remain the property of Mappy. Unauthorized use, modification, and/or reproduction of these documents is prohibited without written permission. The material contained herein reflects the Consultant's best judgement in light of the information available at the time of preparation. Any use which a third party makes of the documents, or any reliance on or decisions to be made based on them are the responsibility of such third parties. The Consultant accepts no responsibility for damages, if any, suffered by any third party as a result of decisions made or actions based on the documents.



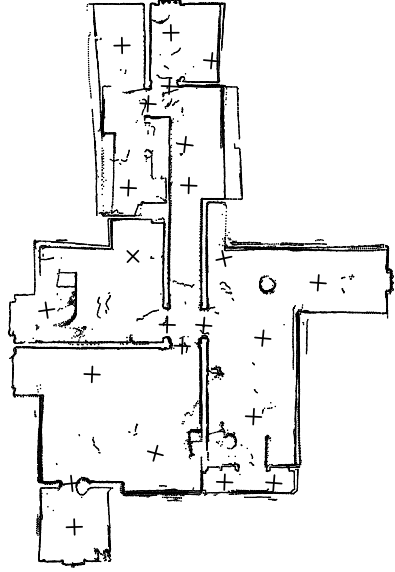
1/16" = 1'-0"
2023.05.08

SECOND FLOOR PLAN - POINT CLOUD

Project No.: 491.23.4
EXISTING CONDITIONS



Do not scale drawings. Contractors must check and verify all dimensions and report any discrepancies to Mappy before proceeding with any work. All documents remain the property of Mappy. Unauthorized use, modification, and/or reproduction of these documents is prohibited without written permission. The material contained herein reflects the Consultants best judgement in light of the information available at the time of preparation. Any use which a third party makes of the documents, or any reliance on or decisions to be made based on them are the responsibility of such third parties. The Consultant accepts no responsibility for damages, if any, suffered by any third party as a result of decisions made or actions based on the documents.



1/16" = 1'-0"
2023.05.08

ATTIC PLAN - POINT CLOUD

Project No.: 491.23.4
EXISTING CONDITIONS

