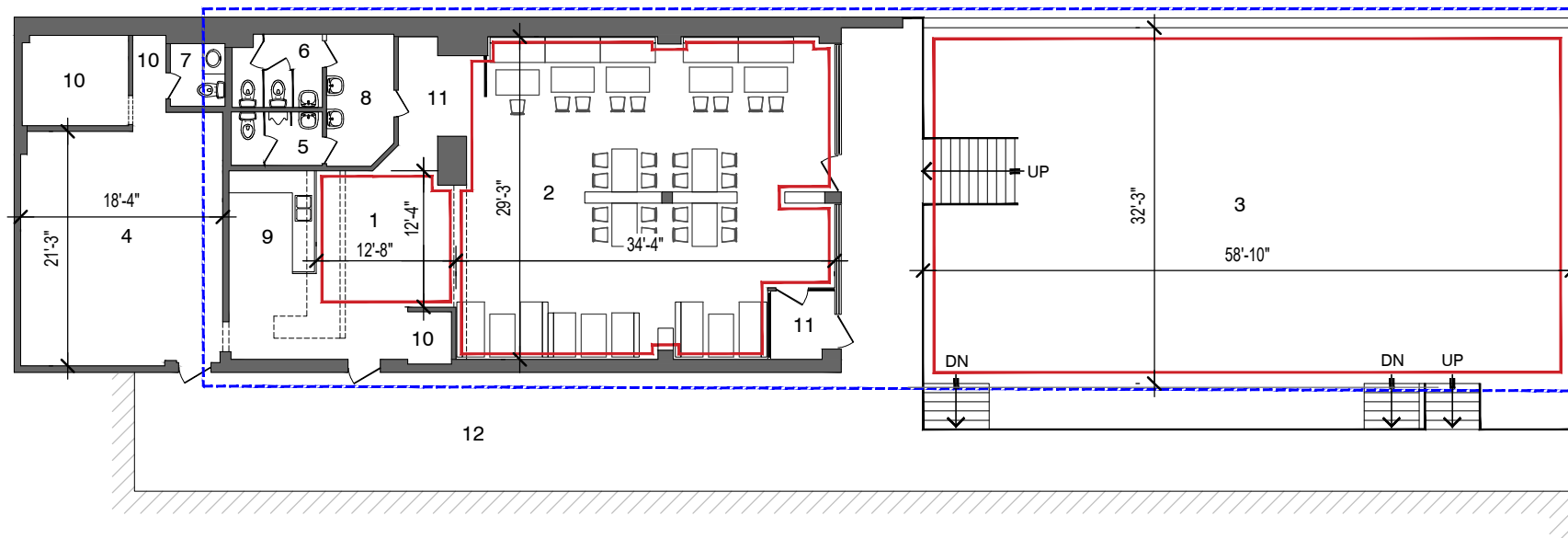
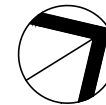


Do not scale drawings. Contractors must check and verify all dimensions and report any discrepancies to Mapply before proceeding with any work. All documents remain the property of Mapply. Unauthorised use, modification, and/or reproduction of these documents is prohibited without written permission. The material contained herein reflects the Consultants best judgement at the time of preparation. Any use which a third party makes of the documents, or any reliance on or decisions to be made based on them are the responsibility of such third parties. The Consultant accepts no responsibility for damages, if any, suffered by any third party as a result of decisions made or actions based on the documents.



Room Schedule

- 1 - STANDING BAR
- 2 - SEATING LOUNGE
- 3 - FRONT PATIO
- 4 - KITCHEN
- 5 - MENS WASHROOM
- 6 - WOMENS WASHROOM
- 7 - UNIVERSAL WASHROOM
- 8 - HAND WASH STATION
- 9 - STAFF AREA
- 10 - UTILITY OR STORAGE
- 11 - VESTIBULE OR HALL
- 12 - EXTERIOR CORRIDOR

Area Schedule ft² (m²)

1 - STANDING BAR	154 ft ² (14.3m ²)
2 - SEATING LOUNGE	940 ft ² (87.3m ²)
3 - FRONT PATIO	1897 ft ² (176.2m ²)
TOTAL APPLICABLE AREA (INCLUDING ANCILLARY)	3890 ft² (361.4m²)
TOTAL AREA OF PREMISES	4311 ft² (400.5 m²)

Estimated Capacity

1 - STANDING BAR	13 Persons	as per OBC T.3.1.17.1 Dining Space
2 - SEATING LOUNGE	80 Persons	as per OBC T.3.1.17.1 Dining Space
3 - FRONT PATIO	160 Persons	as per OBC T.3.1.17.1 Dining Space

NOTE: ACTUAL OCCUPANT LOAD TO BE VERIFIED BY MUNICIPALITY.